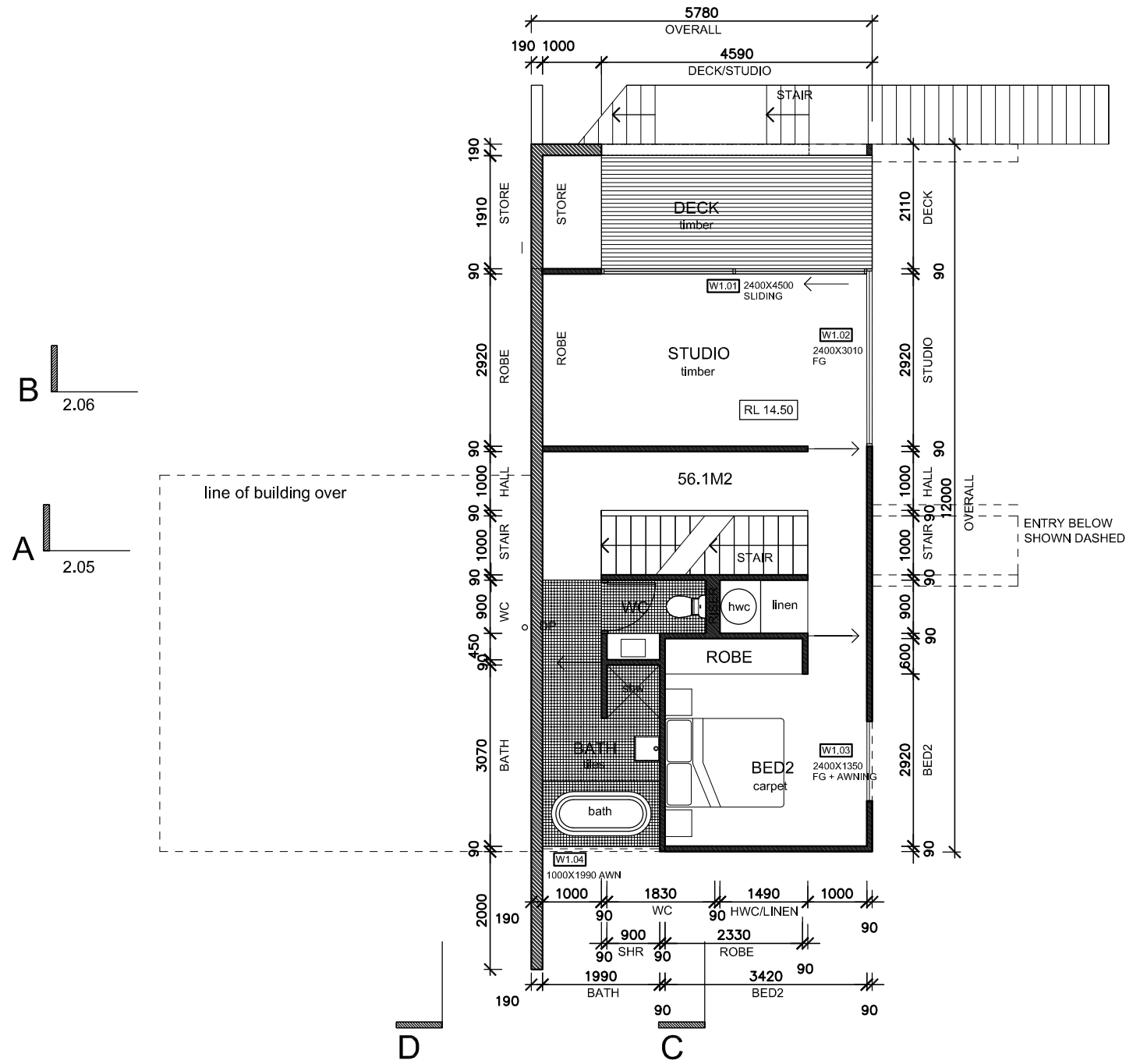


GROUND FLOOR PLAN
1:100



LEVEL 1 FLOOR PLAN
1:100

FOR CONSTRUCTION



Room11
Studio 5th Floor, 50 Elizabeth St, Hobart 7000, Tasmania
Post GPO Box 2132, Hobart 7001, Tasmania
Telephone 03-6234-2847 Fax 03-6234-7253
Email info@room11.com.au Website www.room11.com.au
CC : 1043M

project:
19 EARLWOOD COURT

dwg title :
FLOOR PLANS

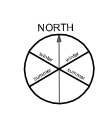
drawn by:
N.CRUMP

date :
Wednesday, March 17, 2010

scale:
1:100

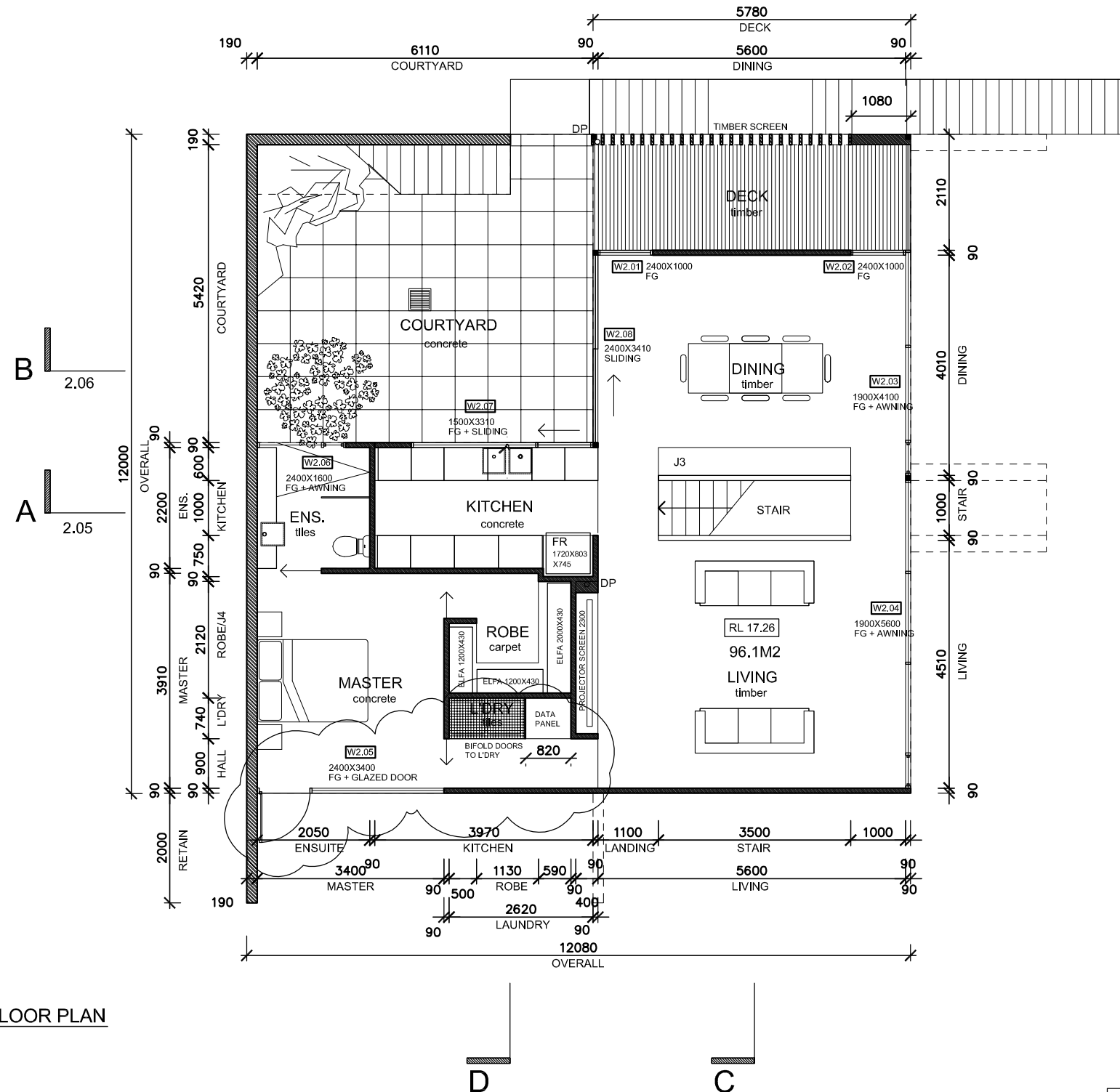
revisions:
A: 17/03/2010
- for BA

general:
Drawings to be read in conjunction with Specification by Room11 and all drawings and documents by engineers and subconsultants referred to in these plans



dwg #: **A1.02** rev: **A**

NOTES : CONTRACTORS ARE TO VERIFY ALL DIMENSIONS ON SITE BEFORE COMMENCING ANY WORK OR PRODUCING SHOP DRAWINGS. ALL DISCREPANCIES TO BE BROUGHT TO THE ATTENTION OF THE AUTHOR. LARGER SCALE DRAWINGS AND WRITTEN DIMENSIONS TAKE PREFERENCE. DO NOT SCALE FROM DRAWINGS. THESE DRAWINGS ARE PROTECTED BY THE LAWS OF COPYRIGHT AND MAY NOT BE COPIED OR REPRODUCED WITHOUT THE WRITTEN PERMISSION OF ROOM 11.



LEVEL 2 FLOOR PLAN
1:100

FOR CONSTRUCTION



Room11
Studio 5th Floor, 50 Elizabeth St, Hobart 7000, Tasmania
Post GPO Box 2132, Hobart 7001, Tasmania
Telephone 03-6234-2847 Fax 03-6234-7253
Email info@room11.com.au Website www.room11.com.au
CC : 1043M

project:
19 EARLWOOD COURT
dwg title :
FLOOR PLANS

drawn by:
J.WILSON, A.ROBERTS, N.CRUMP
date :
Wednesday, March 17, 2010

scale:
1:100
revisions:
A: 17/03/2010
- for BA

general:
Drawings to be read in conjunction with Specification by Room11 and all drawings and documents by engineers and subconsultants referred to in these plans



dwg #: **A1.03** rev: **A**